

T5-600/T5-1000

Electrical Tester

Instruction Card

Warning

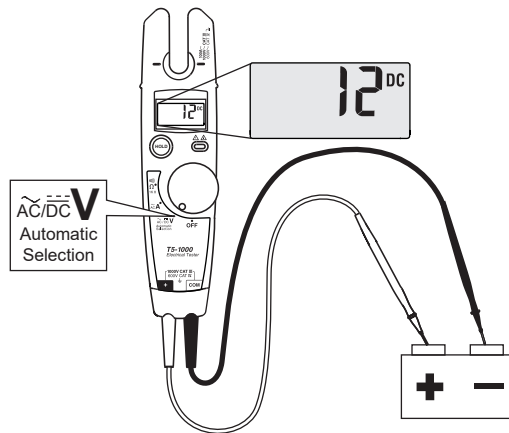
- Read the T5-600/T5-1000 Safety Sheet before using this tester.
- Před použitím této zkoušečky si přečtete bezpečnostní informace k modelu T5-600/T5-1000.
- Przed użyciem próbnika należy przeczytać instrukcje dotyczące bezpieczeństwa zamieszczone w dokumencie T5-600/T5-1000.
- Перед использованием данного измерительного прибора прочтите Инструкции по технике безопасности T5-600/T5-1000.
- Bu test cihazını kullanmadan önce T5-600/T5-1000 Güvenlik Broşürü'nü okuyun.
- T5-600/T5-1000 اقرأ ورقة السلامة الخاصة بـ قبل استخدام جهاز الاختبار هذا.

Voltage Indicator



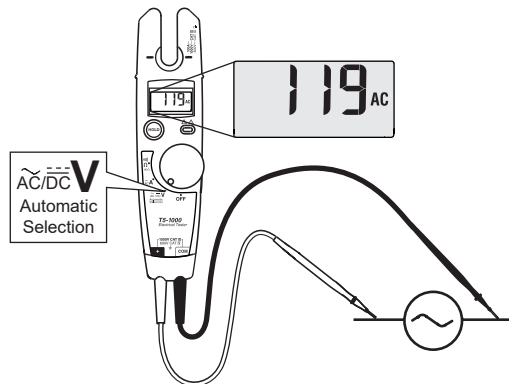
$\approx V$

T5-600 max: 600 V CAT III
T5-1000 max: 1000 V CAT III, 600 V CAT IV

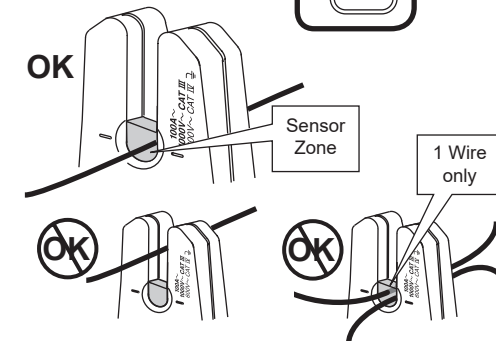
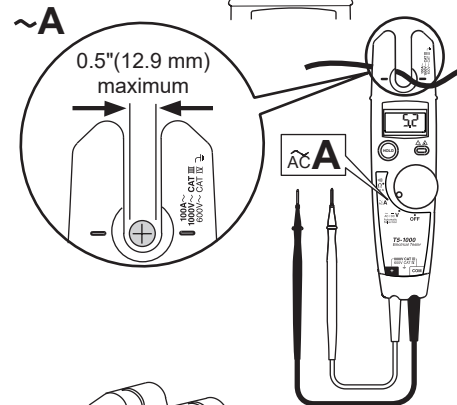
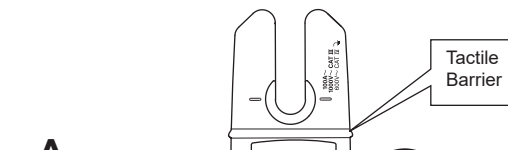
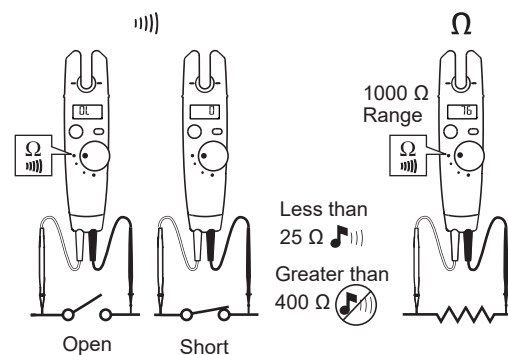


$\approx V$

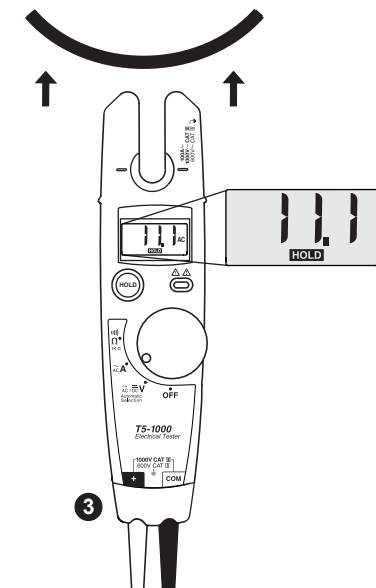
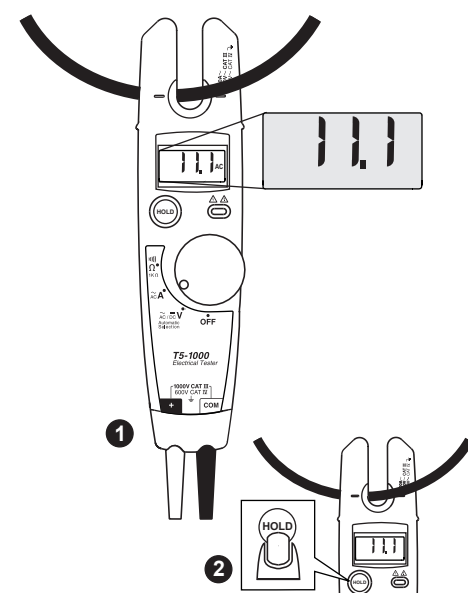
45 Hz - 66 Hz
T5-600 max: 600 V rms CAT III
T5-1000 max: 1000 V rms CAT III, 600 V rms CAT IV



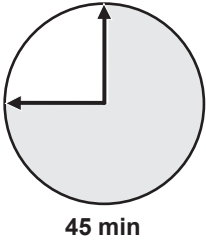
Continuity ||||| & Resistance Ω



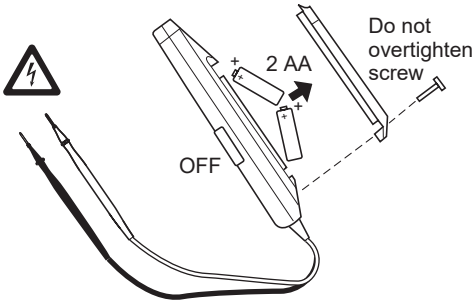
Display HOLD



Auto Off



LO +



Warning

- Disconnect test leads from power source before opening battery door.
- Před otevřením krytu baterie odpojte od zdroje napájení měřicí přívody.
- Przed otwarciem wnęki baterii należy odłączyć przewody testowe od źródła zasilania.
- Перед тем как открыть крышку батарейного отсека, отсоедините измерительные провода.
- Pil kapağını açmadan önce test iletkenlerinin güç kaynağıyla bağlantısını kesin.
- قم بفصل أطراف الاختبار من مصدر الطاقة.

Specifications

Specifications subject to change without notice.

Calibration	1-year calibration cycle
Temperature Operating: Storage:	-10 °C to +50 °C (14 °F to 122 °F) -30 °C to +60 °C (-22 °F to +140 °F)
Altitude Operating: Storage:	2000 m (6562 ft) 10,000 m (32808 ft)
Relative Humidity	0 % to 95 %, 5 °C to 30 °C (41 °F to 86 °F); 0 % to 75 %, 30 °C to 40 °C (86 °F to 104 °F); 0 % to 45 %, 40 °C to 50 °C (104 °F to 122 °F)
Battery Type and Life	AA (2); 360 hours continuous with alkaline; 125 hours continuous with zinc chloride
RF Field Specification	0.5 % full scale + (specified accuracy) at 3 V / m
Enclosure Rating	IP 40 per IEC 60529, no vacuum applied
Temperature coefficient	0.1 x (specified accuracy) / °C for <18 °C or >28 °C (< 64.4 °F or > 82.4 °F)
Accuracy	± ([% of reading] + [number of least significant digits]) Accuracy is specified for 1 year after calibration, at 18 °C to 28 °C (64 °F to 82 °F) with relative humidity to 90 %. AC conversions are ac-coupled, average responding, and calibrated to the rms value of a sine wave input.

Safety IEC 61010-1: Pollution Degree 2
Electromagnetic
Environment IEC 61326-1: Portable

Function	T5-600 Range (600 V CAT III)	T5-1000 Range (1000 V CAT III)	Resolution	Accuracy
\tilde{V}	600 V rms	1000 V rms	1 V	±(1.5 % + 2 digits) 45 Hz - 66 Hz
$\overline{\overline{V}}$	600 V	1000 V	1 V	±(1 % + 1 digit)
\tilde{A}	100.0 A	100.0 A	0.1 A	±(3 % + 3 digits) 45 Hz - 66 Hz
Ω	1000 Ω	1000 Ω	1 Ω	±(1 % + 2 digits)

Replacement Parts

Test Lead Assembly. Replace only with Fluke double-insulated leads (▢) See "Accessories" for available probes.	PN 648029
Battery Door	PN 2091779
Battery Door Screw	PN 8758161

Use only specified replacement parts.

Accessories

H5 Belt Holster
TP1 Probe Set, Flat-Blade
AC285 SureGrip™ Alligator Clips
AC220 SureGrip™ Alligator Clips
Service Information Sheet, PN 686953

Fluke Corporation operates worldwide. For local contact information, go to our website: www.fluke.com

To register your product, view, print, or download the latest manual or manual supplement, go to our website.
Fluke Corporation

P.O. Box 9090
Everett, WA 98206-9090
+1-425-446-5500
fluke-info@fluke.com