

## Recommended data center solutions

### Fluke Connect

**Best suited for:**

- Simplifying preventive maintenance programs
- Seamlessly integrating tool data into software
- Diagnosing asset health in the field
- Cloud-based data sharing



### Thermal imagers

**Best suited for:**

- HVAC and hot aisles/cold aisles inspection
- Identifying "hot spots" in motors and compressors
- Inspecting temperature in server racks and power supply systems
- Building insulation inspection



### Power loggers

**Best suited for:**

- Capturing and logging over 500 power quality parameters
- Troubleshooting and performing advanced analysis on power quality issues
- Energy surveys to determine sources of electrical energy waste



### Earth ground testers

**Best suited for:**

- Earth resistance loop and soil resistivity testing
- Safety of personnel and proper operation of equipment
- Diagnosing intermittent electrical problems related to poor earth grounding



### Battery analyzers

**Best suited for:**

- Maintenance, troubleshooting and performance testing of UPS banks
- Measuring battery resistance, AC and DC voltage and current ripple voltage, frequency and temperature



### Digital multimeters

**Best suited for:**

- Electrical system installation and troubleshooting
- Quick voltage detection
- Environments with both AC and DC (autoVolt) or ghost voltages
- Use with HVAC systems and electrical panels



### Power quality analyzers

**Best suited for:**

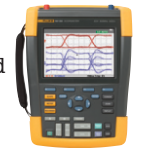
- Troubleshooting and preventing problems in power generation, transmission and distribution systems
- Conducting load studies to reduce energy usage
- Use with motors, pumps, generators, transformers, compressors and electrical panels



### Portable oscilloscopes

**Best suited for:**

- Installing and maintaining electronic industrial equipment out in the field
- Diagnosing industrial machinery, automation and process controls and power electronics



### Temperature Humidity Meter

**Best suited for:**

- A lightweight, rugged, and easy to hold dual display temperature humidity meter that allows you to take accurate humidity and temperature readings. Additionally, it is ideal for facility maintenance and utility technicians, HVAC/R-service contractors, and specialists who assess indoor air quality (IAQ).



### Vane Anemometers



- Vane anemometers are well suited to measure air flow in residential and commercial buildings as part of regular maintenance checks.

Fluke. Keeping your world up and running.®

#### Contact information

**FLUKE TECHNOLOGIES PVT. LTD.**

Toll Free : 1800 419 3001

Email : info.india@fluke.com

Web : www.fluke.com/india

**Our Service & Calibration facility in India**

**Tektronix India Pvt. Ltd.**

Bangalore – Contact No : 080 68052898

Thane (West) – Contact No : 022 60506789

Email : support.india@fluke.com /

India-service@tektronix.com

#### Connect with us



www.facebook.com/flukeindia



www.linkedin.com/company/fluke-corporation



www.twitter.com/flukeindia

## Data Center Solutions

### Solutions for data center professionals.

Data center professionals are responsible for the storage, management, and dissemination of data and information, without interruption. It's a huge task in our data-reliant society and people count on the delivery of the information they need, whenever they need it. The professionals working in this critical business must be able to rely on their tools to keep things up and running.

Fluke makes a full suite of reliable, high quality test and measurement tools that data centers can count on. We understand the challenges these professionals face every day. The decisions they make are based on the information their test equipment is providing. They can't make informed decisions if they can't rely on the data they're being given. They can be confident that Fluke tools will give them consistently correct information to do their jobs.

## Data Center Facility Manager

### Issues faced:

- Maximizing uptime
- Maintaining environmental conditions
- Preventative maintenance
- Control energy costs

### Fluke solutions:

- Fluke Connect
- Power quality analyzers
- Portable oscilloscopes
- Thermal imagers
- Vibration tester

## HVAC/Mechanical Technician

### Issues faced:

- Maintaining controlled environment for sensitive equipment
- Ensuring HVAC and mechanical equipment is compliant with industry standards

### Fluke solutions:

- Fluke Connect
- Multifunction process calibrators
- Process test tools
- Indoor air quality
- Digital multimeters
- Clamp meters
- Thermal imagers
- Vibration tester
- Anemometer

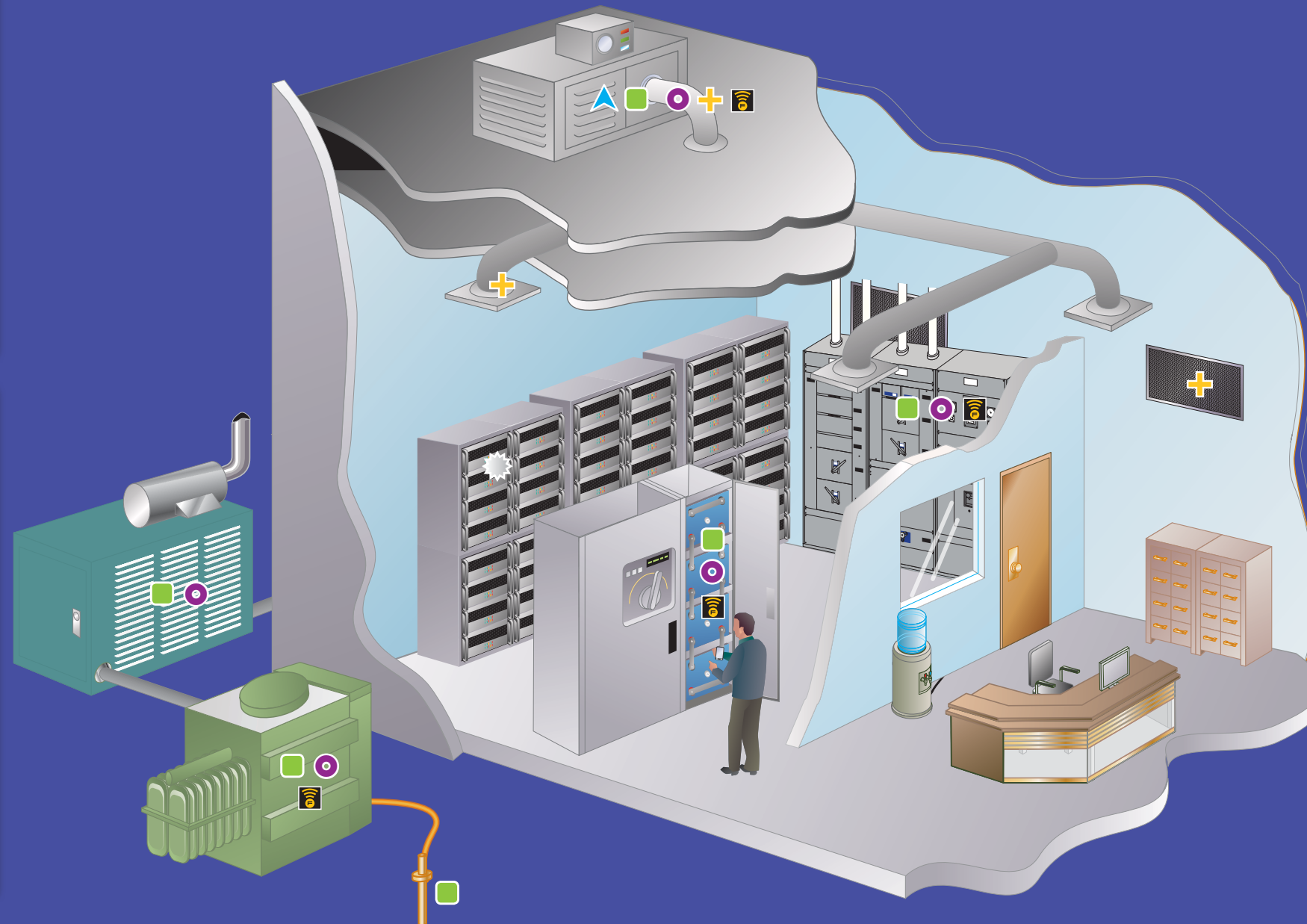


Diagram is not intended to be an exact representation.  
Diagram components are not to scale and are for illustration purposes only.

## Electrical Engineer/UPS Technician

### Issues faced:

- Load checking
- Meeting electrical safety standards
- Unscheduled downtime
- Troubleshooting sensitive equipment

### Fluke solutions:

- Fluke Connect
- Power quality analyzers
- Digital multimeters
- Power loggers
- Earth ground testers
- Earth ground clamp meters
- Battery analyzers
- Thermal imagers

## FLUKE networks

### Cable testers

Copper	Fiber	MPO
DSX-5000 CableAnalyzer™	OptiFiber® Pro OTDR	MultiFiber™ Pro

For information about Fluke Networks products visit [www.flukenetworks.com](http://www.flukenetworks.com).

## Data center solutions

We offer a full line of data center solutions to fit all needs.  
Go to [www.fluke.com](http://www.fluke.com) for detailed information on these products.

Electrical Test Tools								Infrared and Vibration Tools			Air Quality	Anemometer	Software	
Power quality analyzers	Portable oscilloscopes	Power loggers	Earth ground clamp meters	Earth ground testers	Clamp meters	Battery analyzers	Digital multimeters	Thermal imagers performance series	Thermal imagers professional series	Vibration tester	Indoor air quality	Hotwire Anemometer with Temperature	Data logging Anemometer	Maintenance software